



Be part of the solution

PERSONALISATION
INTEGRATION
TRAINING

EVENT-DRIVEN ENTERPRISE MANAGEMENT SYSTEMS
FOR COMMERCIAL, CORPORATE AND
TRADE FINANCE ACTIVITIES



Commercial, Corporate and Trade Finance

WWW.CODIX.EU

FRANCE BULGARIA USA SPAIN BELGIUM POLAND TUNISIA VIETNAM





Commercial, Corporate and Trade Finance

Tailor made solution with the qualities and price of a standard software package	3
An original and innovative concept	4
Famous references	5
The most advanced technologies	6
Event-driven management of cases	7
The set-up methodology	9
Yet more capabilities	10
Services	12
iMX Commercial, Corporate and Trade Finance: Main functionalities	13
iMX Commercial, Corporate and Trade Finance: Business Processes	14
iMX Commercial, Corporate and Trade Finance: Cases	18
iMX Commercial, Corporate and Trade Finance: Administration	20
iMX Commercial, Corporate and Trade Finance: Accountancy and invoicing	21
Contact	22



Tailor made solution with the qualities and price of a standard software package

- **iMX** is the result of several years of research and development and constant innovations. The development is shared between CODIX headquarters in Sophia Antipolis – the first European Technology Park located near Nice, France – and Sofia (Bulgaria) with high level specialists. Business Consultants and Project Managers are also located in Paris, Bordeaux, Tunis, Warsaw, Atlanta and Ho Chi Minh.
- **iMX** is an innovative software solution which allows the implementation of business functionalities and company specific needs in one technical structure that is easily customizable.
- **iMX** integrates natively the most advanced concepts and tools (Total Events Management, Dynamic Redefinition of Databases, Workflow, Electronic Document Management, Extranet, E-mail, Telephony, Fax, and SMS) into one global approach.
- **iMX** uses a «Thin Client» model: Intranet / Extranet/ Internet.
- **iMX** is developed by a team of experts in various fields able to propose appropriate business solutions.
- **iMX** handles multi currency and multilingual support for production and management (dynamically on the same server).
- **iMX** is supported by a top-level team offering efficient and tailor-made service through remote maintenance. This service is top-rated by our Clients.
- **iMX** is the contractual commitment of CODIX to customize every system installed for any needs of Client on a fixed-price basis.
- **iMX** features an unprecedented level of openness and flexibility in the management of **Factoring, Commercial, Corporate and Trade Finance, Invoice Discounting & Asset Based Lending Companies.**



An original and innovative concept

Until now, various businesses that desired full or partial renewal of their IT system required from the Management and the IT Department to choose between specific developments and standard software solutions.

The advantages and drawbacks of both formulas are well known:

- Adaptation of specific developments to the needs but frequent cost and delivery dates overruns,
- Lower cost of standard software but users forced to work with a tool difficult to customize,
- Changes dictated by the environment (ex.: merger, new organization or laws, etc.) are difficult, costly and time consuming,
- High technical complexity for integrating tools coming from several software editors (ex.: add in of Electronic Document Management or CTI on specific software or standard solution, etc.)
- Etc.

CODIX has developed an event-driven enterprise management tool able not only to integrate in a unique technical frame all the data of your Company but also all the rules of management, calculation, workflow, allocation of cases to users, business activities, etc.

In addition to this extraordinarily open and powerful solution, based on the latest technologies, CODIX has developed a unique and fully integrated additional set of tools to answer all the needs of users:

- Management of images,
- Management of fax,
- Management of e-mails,
- Management of telephony,
- Management of SMS,
- Management of text editor.

iMX is a totally unique software solution for **Factoring, Commercial, Corporate and Trade Finance, Invoice Discounting & Asset Based Lending Companies** with no equivalent in terms of return on investment.

CODIX Clients can confirm it.

Famous references

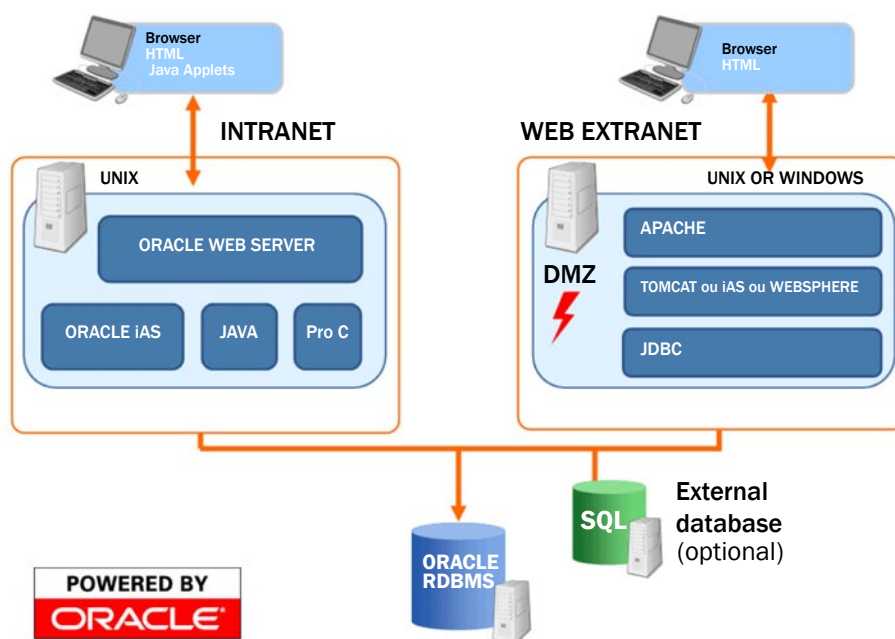
iMX has been chosen by the largest companies in various business sectors:



- ABSA Working Capital (Barclays group)
- ATRADIUS
- BKCP (CRÉDIT MUTUEL Group)
- CA Leasing (Crédit Agricole Group)
- CETELEM and COFINOGA (BNP PARIBAS Group)
- CGI (Société Générale Group)
- CRÉDIT SOCIAL DES FONCTIONNAIRES
- DEXIA CF
- EFFICO Iberia, EFFICO Portugal, SFRB, CONVERGENCE (EFFICO-CETELEM Group)
- EULER HERMÈS BELGIUM
- FIDUCRE (ING Group)
- France TELECOM, MOBISTAR, SONATEL
- GE Capital Mexico & Latin America
- EUROFACTOR
- KBC Commercial Finance Group
- KBC Consumer Finance
- MAROC FACTORING
- SCP BOCCHIO, SCP LEYDET
- SOCIÉTÉ TUNISIENNE DE BANQUE
- SOFINCO, FINAREF
- TUNISIANA
- TUNISIE FACTORING
- UNEDIC (Assurances Garantie des Salaires)
- Universum Inkasso Belgium and The Netherlands (Arcandor Group)
- UPS CAPITAL
- VW Group Services
- WWW.IDEALWINE.COM
- Etc.

An active User's Club regularly welcomes CODIX Clients.

The most advanced technologies



Since their very first developments **iMX** designers have remained faithful to some fundamental principles:

- UNIX Server (AIX, HP-UX, SUN SOLARIS),
- Thin client workstation,
- Oracle Technologies (databases, application server).

An open-ended model providing stability and long-term reliability have been the main criteria for choosing our partners.

Today **iMX** uses the latest available technologies:

- the **iMX** workstation is a PC with a browser that launches a Java applet - within which the application is executed - or opens an HTML page,
- Java applets of **CODIX** are used for the display of images or mail, for notification of incoming telephone call etc.
- user interfaces have been developed with Oracle IAS (Internet Application Server) tools or with the J2EE technologies,
- the inference engine of the Expert System is in Pro*C .

This technology offers undeniable advantages:

- ease of deployment,
- integration into all types of networks,
- immediate access to latest software release from all workstations (remote maintenance).



Event-driven management of cases

What does “absolute event-driven management of cases” mean?

For CODIX, all data - whatever their nature – entered into the system from a keyboard input or from an interface with another system, must be, at all times, available for processing.

The system must be able to apply any management rule and, if need be, initiate an action (issuing a mail, sending a fax, relocation of a case in a diary for immediate or subsequent action, assigning a case to a manager, etc.).

Furthermore, the system must be able to handle any data in a case, as well as the level of third-party involvement in a case, the data in a document (invoice, contract, damage claim, details of a judgment, etc.) and all related financial elements.

iMX is the effective answer to all these needs:

Dynamique database redefinition

iMX – within the frame of the logical case structure unique for every processed job and for every Customer - allows a dynamic redefinition of a large part of the Oracle database on each customer site: any specific customer data, regardless of business, can in this way and **without any limit** be brought into the system.

Management of specific data for each iMX customer

Once specific data is stored in the database, **iMX** handles the concept of a “document”, i.e. a logical set of data entered into a case (e.g. the “contract” document, the “invoice” document, the “damage claim” document, etc.). If a customer cannot find a suitable model in the large library of existing documents in the system, it is always possible to create a new specific document. Likewise, it is possible to handle data specific to every type of third-party in the case (client, provider, insurance company, expert, lawyer, etc.)

Variables

All data (standard or specific) can be defined as “variables”, which is:

- either **data** contained in the Oracle database (e.g. the post/zip code of a third party, the name of an expert, the balance of the debt, etc.),
- or **objects** defined from simple data (e.g. the average balance amount of cases of the same category, the number of cases per type of provider, etc.),
- or even the **result** of the execution of a group of rules by the expert system (e.g. the scoring “Client Quality”).

The variables can be used by the expert system rules and integrated into texts (printed letter, fax, e-mail, SMS etc.) issued by the system.

Expert System

Includes two subsets:

- a system that stores all the system **rules** (management and legal procedures rules, calculation rules, assignment of document cases to users, etc.),
- a library of **texts** issued by the system (letter, fax, e-mail, SMS).

The Expert System development can be ensured by every Customer due to the top-level tools provided with a Base Module:

- **ES Designer**: full graphic management of the Expert System rules,
- **System Text Editor**: management of the library of all texts issued by the system.

iMX allows the MANAGEMENT of ALL DATA and ALL MANAGEMENT RULES in ANY COMPANY



The set-up methodology

The set-up of such an open and powerful solution cannot be carried out in the same way as a conventional software package. A rigorous set-up methodology has proved to be necessary. It is based on our knowledge of your business and the technical skills of our consultancy and development teams.

It is carried out within the framework of CODIX "System Quality", which is **ISO 9001:2008 certified**.

Business Expertise:

The detailed specifications of each tailor-made customer system are made according to a specifications project proposed by CODIX business experts.

Integration of an iMX system in any customer Information System:

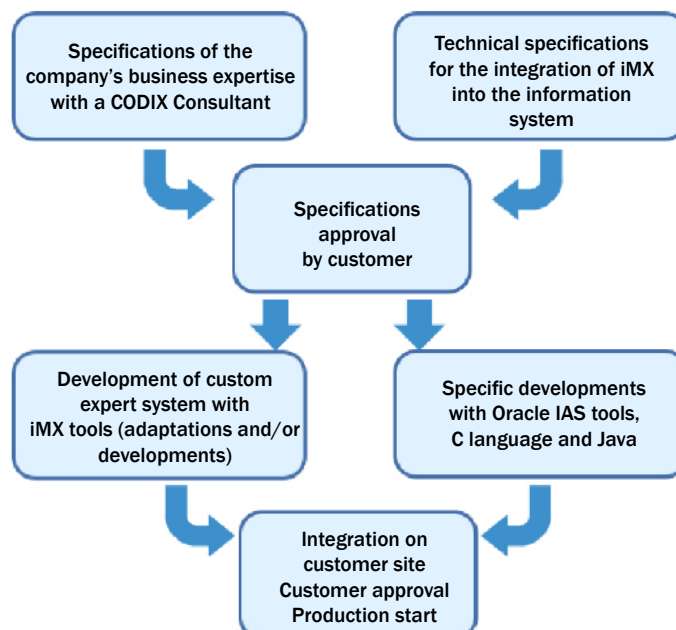
Depending on constraints and requirements, the standard interfaces, the "document" forms and the reports supplied as standard are used. Also at this stage, thanks to the open-ended structure of the solution, it remains simple to add any specific developments that may be necessary to meet the customer's needs.

Integration services on site:

CODIX commits to all services of integration on site.

These services are fulfilled by CODIX BY CONTRACT

Based on the contract framework study or on Customer specifications





Yet more capabilities

To provide further services and in order to meet all general or specific requirements of its clients, CODIX is devoted to the development of additional tools, integrated natively into the application. Integration and set-up costs for these modules are therefore reduced to nil.

1 **iMX TEL**

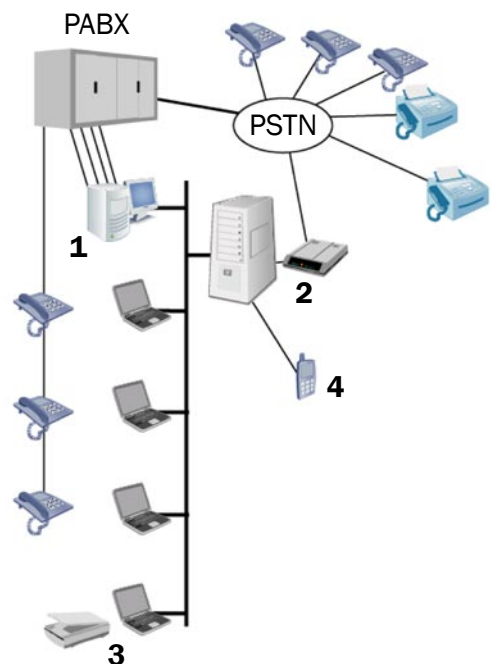
This module automatically handles the outgoing and incoming telephone calls and manages a vocal server.

The interface is carried out either through connection with PABX by Dialogic cards or through use of VOIP technology.

iMX TEL is at the top level of market systems with technical telephony functionalities.

The base module includes management of assistance scripts, user groups and numerous statistics and reporting – some of which are carried out in real time.

Additionally, the integration to the Production data base and the real-time management by the Expert System make **iMX TEL** the most competitive tool on the market.



2 **iMX FAX**

This module allows the Expert System and users to both print and fax documents to any addressee. The status of issued faxes is stored on case level and in a logbook. Cost and time savings (for printing, handling, sending) are obvious. If the system has the imagery option, this module is also able to receive faxes from your correspondents and store them. The user can then either print them or assign them directly to a case. When this happens, the case manager is notified.

3 **iMX** IMAGERY

This feature boosts efficiency and provides direct access – via case chronology – to images of scanned documents or received faxes. Images could also come in from information systems outside iMX. Images stored in an iMX case can be processed by the Expert System (ex.: printing of letter with attachment of contract copy, faxing a lawyer scanned image of client letter etc.)

4 **iMX** SMS

This module ensures SMS sending by simply connecting a mobile phone to the server or, in case of high volumes - through connecting to the special service of a cellular phone operator.

5 **iMX** AD

With the AD module (Analysis and Decision) CODIX delivers for each business an Info centre designed by CODIX and operated by Oracle Discoverer software. Thus every Client takes immediate advantage for its business of objects and reports. Later, the tool can be easily parameterized in order to meet specific Client's needs.

The iMX main module is delivered with integrated E-mails management tool.



Services

Continuous support by remote maintenance

iMX systems are equipped, for remote maintenance, either with a modem connected to the telephone network or with a router on an ISDN line.

These connections are made entirely secure. In this way we can safely, rapidly and automatically transmit any modification, specific development or new version of the software to all our clients.

With this tool, our remote maintenance team can reveal its high-level competence, availability and experience in your business.

The assistance by remote maintenance is one of the services provided as part of the **GLOBAL SERVICE CONTRACT**, which also includes telephone support and new release delivery.

Training

The installation of new software always necessitates appropriate and efficient training.

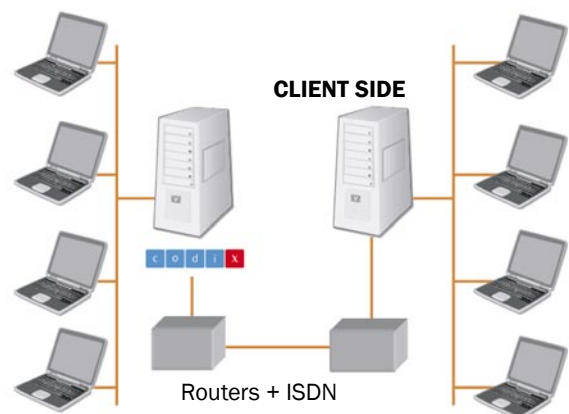
CODIX has therefore developed a set of training modules suitable for each function in the department service:

- Business Operations,
- System Administrator,
- System Operation ,
- Conceptual Data model.

For companies prepared to assume responsibility for the carrying out and the maintenance of their Expert System, the module “Expert System Practice” is provided.

The flexible structure of this training plan enables it to be adapted to the organization of any company.

The training can be completed by assistance during the production start.



Commercial, Corporate and Trade Finance Main functionalities

Multilingual and multi currency events based software, **iMX Commercial, Corporate and Trade Finance** offers a complete solution for the management of a **Factoring, Commercial, Corporate and Trade Finance, Invoice Discounting & Asset Based Lending** company (even with multiple entities), Reverse, Forfeiting, Confirming:

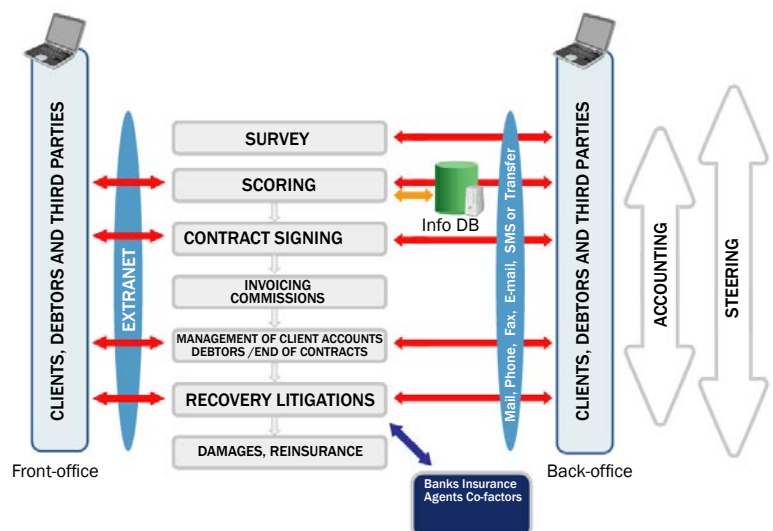
- Prospects and contract set-up, contract follow-up and revisions,
- Portfolio management (assignment, re-assignment, due date extension...),
- Financing and client account management,
- Payment allocation & cash application, account management, litigations
- Invoice dunning and collection, via flexible dunning strategies at contract and debtor account levels
- Debtor risk protection, payment under guarantee
- Third party management,
- Credit insurance by **Commercial, Corporate and Trade Finance** company or other, This regardless of contract's nature: domestic, import, export, confidential, semi-confidential, bulk, shadow ledgering
- Web based access for clients and branches to view account, confirm receivables, request payments, load receivables

iMX Commercial, Corporate and Trade Finance also handles completely the relationships with all stakeholders in the contract: clients/suppliers, debtors/buyers, brokers, banks, cofactors, credit insurers, lawyers, etc... and this through the whole life cycle of the contract. **iMX** provides the account managers with a real time and always up-to-date view of the client account.

iMX handles the real time event based commissioning and cost invoicing. Besides the management of debtors, in case of litigations or non-payments, the case is also subject to the «Collection and Legal Department» functions of the unique **iMX** solution, handling in the same business processes the reinsurance and legal issues.

iMX provides users with full transparency in the accounting operations during the whole case processing, allowing therefore a detailed movement audit and a tracking up to the triggering event which originated the accountancy movement.

iMX offers the company all steering tools needed.



Commercial, Corporate and Trade Finance Business Processes

Registration of prospect by Back-office

- Input: creation of the prospective contract (domestic, import and/or export) with the different actors, proposal of contract
- Estimation Commercial, Corporate and Trade Finance commissions with tariffs grid

Study of prospect - Scoring

- Review of supporting documents and estimation of risks and guarantees: scoring of prospect and examination of his debtors coupled with check of external databases in order to take decision on the contract approval

Contract

- Request of necessary documents and information on producer and/or client, co-factor...
- define contract type, products and options: recourse, non-recourse, reverse... and options: ABL, SCF, confidential, dedicated account, shadow ledgering, BULK...

Signing of contract

- Registration of the signed Contract, registration of signature card
- Automatic and manual allocation of account manager
- Sending mails of subrogation and opening of accounts for debtor
- Follow up of contract's start, restart, suspension, termination
- Registration of client-dedicated bank account for confidentiality

Set up of guarantees

- Registration of guarantees
- Annual control, re-evaluation and mailing on guarantees information

Commissions evaluation for producer, co-factor, provider

- Estimation of commissions and costs to pay, reporting
- Issue of commission statements and payments
- Issue of end of period (day, week, month, quarter) for the Commercial, Corporate and Trade Finance service costs

Receipt of third party invoices (lawyer, bailiff...)

- Registration and control of invoices sent by third party
- Issue of payments by third party after validation and deduction of costs

Invoicing third parties: (co-factors, clients)

- Estimation of commissions to perceive (Commercial, Corporate and Trade Finance commission, financing commission, commission per credit transfer, per document handled, per request approval, per cheque handled,...) and invoicing
- Estimation of costs and services and invoicing
- Periodical readjustment of commissions and invoicing
- Follow up of payment from third parties on issued invoices, capture of settlements

Opening of debtor accounts

- Receipt of requests (on paper, electronic, extranet, etc.)
- Creation of client/debtor cases
- Automatic or manual validation according to preset criteria
- Automatic and manual allocation of collectors
- Client slip for created or rejected accounts
- Letter to debtor with opening notification

Credit risk protection

- Management of credit limit request, opinion request, financing limit request
- Multi levels global level limit (debtor, client, group of debtors, group of clients)
- Multi levels line by line level limit (client/debtor, client/group of debtors, group of clients/debtor)
- Automated decision process based on scoring, or Credit Insurer protection, or co-factor provided credit limit
- Automatic or manual decision validation and activation, based on contract parameters
- Client notification of decisions
- Payment under guarantee (manual and automatic)
- Native integration with RiskFactor©

Modification, closing of debtor accounts

- Modification of data
- Modification of structure (merging, suspension...)
- Closing (according to criteria: blocking purchase, outstanding balance at zero...)
- Purge (closed since x time, etc.)
- Blocking debtor accounts
- Letter of notification to debtor

Processing remittances of receivables

- Receipt of receivables (on paper, electronic, extranet, etc.) by remittance or by complete ledger comparison (shadow ledgering), by file/bulk upload or manual entry
- Issue acknowledgement receipt
- Multi level check up of remittances (consistency compared with parameters at factor, client, debtor, contract, account levels)
- Correction of inaccuracies
- Validation of receivables (manual or automatic according to preset criteria)
- Automatic triggering of real time financing calculation, risk protection calculations, and portfolio updates
- Acceptance, rejection, put on stand by of receivables (automatic according to preset criteria with manual modification/validation according to preset parameters)
- Automatic opening of debtor accounts (according to preset criteria)
- Issue of documents following the parameterized periodicity (slip of details for receivable remittances, letter for restitution of receivables, credit notification, debit notification, purchase report, client notification)

Financing

- Transaction/Invoice level financing and revolving facilities
- Real time financeable amount (globally and invoice) following preset parameters (scoring, approval by set of client/debtor, approval by group of debtors, litigations, ceiling of financing by client, group of client, etc.)
- Up-to-date real time funds-in-use and availability
- Automatic or manual financing following management parameters
- Possibility for manual or automatic provision considering visible risks (guarantee funds, reserves, etc.)
- Automatic or manual processing of expired approvals
- Multi product facilities (receivables + ABL, receivables + Purchase Order financing...)

Payments to the client

- Capture of payment requests (automatic estimation of allocations by mode of payment as stated in contract)
- Advances management, fixed-term advances, bank warranty
- Validation of disbursements

Processing of debtor/buyers payments/Cash application

- Receipt of debtor payments (dematerialized, material, confidential), processing of rejected settlements
- Client letter for direct settlement
- Automatic, semi-automatic and manual cash application to debtor accounts (allocation) and to receivables (matching), following preset rules: age of account, amount by case, by client, by debtor, by invoice...
- Estimation of expected payment amount following discounts, credit notes, litigations
- Report on settlements by client being attributed
- Report on settlements by factor being attributed
- Notification of adjustment to client
- Cancellation of cash application
- Management of non-attributed payments
- Management of debtor reimbursements

Debtor dunning

- Management of non-payments, search for out-of-court settlement, follow up of out-of-court settlement
- Reminders (by fax, e-mail, telephone, mail)
- Formal notice
- Flexible and adjustable dunning strategies, defined at factor, contract and client/debtor levels

Contract follow-up

- Request for evaluation of contract-related risks
- Issue of report on risks related to client
- Processing bankruptcies
- Adjustment of management parameters
- Analysis of contract's profitability

International

- Complete and seamless integration with FCI messaging system
- Complete and seamless integration with IFG messaging system

Contract re-evaluation

- List of contracts to re-evaluate
- Readjustment of tariffs grid
- Form for re-evaluation committee
- Issuing additional clauses
- Covering letter
- Information letter to producer

Contract termination

- Capture of termination and modification of management parameters
- Follow up of advance notifications
- Balance of all accounts

Archiving

- When closed, cases (contracts, debtor accounts) are archived at user's request or according to Expert System rules. A restricted set of data is kept in the production system for statistical analysis and operational searches.
- De-archiving features for full access to old data

Client litigations

- Lean on securities by third party (declaration of sums detained, release request, etc.)
- Litigation management – see detailed description in «iMX Collection & Legal» documentation

Credit Insurance

- Follow up of client's credit insurance policy, line by line and global policies. Re-insurance by one or many credit insurers (by priorities, by proportional split)
- Follow up of internal credit insurance
- Follow up of external credit insurance

Monitoring

- Requests for follow-up based on specific risks, populations, etc.
- Requests for set-up of planning: follow-up of population, increase of population, sell insurance to a given population
- Set up of follow-up indicators
- Statistics by population

Periodical processing

- Automatic re-estimation of scoring for client and debtor
- Issuing contractual documents (debtor statement of account, client statement of account, etc.)

Commercial, Corporate and Trade Finance Cases

Client's case is created during survey and/or at the signing of the contract.

Cases client/debtor are created during the whole duration of client's case.

- Automatic attribution of the case number,
- Attribution of case manager through Expert System rules according to the authorizations and the profile (account manager for contract cases, collector for client/debtor account cases, international department assistant for co-factor cases, etc...)
- Unlimited number of actors involved in cases, every actors being always unique in the base of individuals (companies, private person).

When introduced into the Expert System, the case is automatically processed without the participation of user and according to events. At any moment, the user can take control over case and process it "in manual" in order to deal with particular situations not described in the Expert System rules.

Every case manager (user) has a schedule, i.e. a list of cases and tasks on which he must intervene because no actions have been carried out by the Expert System. Messages, since a human action is required. These tasks are generated either from the Expert System or from a manual action of the case handler or another user. Some actions have deadlines for handling. If not respected, the system posts a message in the mailbox of case handler's supervisor. Thus, pending cases are accurately followed-up.

At any moment, the user can view the «chrono» - a history list of all events that have occurred in the case, sorted in reverse chronological order to facilitate the search on recent events, with the option to:

- Access the contents of all the issued texts (letters) and immediate reprint of a letter,
- View all received documents and possibility for printing (imagery optional module),
- View details of all accountancy and management elements present in the case.

A scroll menu, allows direct access to all business processes as well as to iMX functionalities:

- Texts: a set of texts allowing the printing or the personalization of any letter of the case through the CODIX Text Editor
- Express: for fast sending of free wording mail to any actor from the case or the database
- Access to other cases of the same actor (client, business provider, supplier...)
- Data entry (or receipt by interfaces) of any fund transfer: incoming payments, with controlled allocation over client-debtor account cases and automatic matching on

- receivables, refunding (transfers, cheques), transfer case to case
- Modification of the matching of debtor payments on receivables
- Data entry of information (example: notes on a conversation by phone)
- Case form: display and update of all the data in case:
 - ▣ Actors, Contract, Assets...
 - ▣ Add actors (third parties or other)
 - ▣ Data entry of additional documents in the case
 - ▣ View the Expert System: current and past case stages
 - ▣ View the case account
 - ▣ Disarchiving of case
- The system administrator can personalize the menus of each user and assign him authorizations.

The user has a permanent online help and pop up function buttons.

Data exchange (standard or specific interface)

- Automatic creation of data (cases, individuals) with incoming information from other information systems of the company – for ex. migration.
- Information retrieval (receivables, debtor payment, bank account statement, limit requests, FCI/IFG messages...) and sending of data to other systems (outgoing payments file for bank, limit decision, client statement, FCI/IFG messages).
- Full seamless integration with the general ledger systems, with external commercial databases such as D&B, Graydon.

Extranet

- Clients can check their current account, debtor accounts, consolidated account, follow their receivables remittances, real time financing, real time availability, real time funds in use, settlements; input or send by file their requests for opening/closure of debtor account, submit their newly emitted receivables request for disbursement, their direct payments, communicate with their respective case users and download their statements. Clients can also do their transfer or right, approve their receivables for financing in reverse factoring/SCF.
- Debtors can check their accounts by client and eventually make on line payments (remote payments).
- The company users can connect remotely to access the application and all of its functions.

So, iMX enables the handling of all data and management rules for the Factoring, Commercial, Corporate and Trade Finance, Invoice Discounting & Asset Based Lending Companies..

Commercial, Corporate and Trade Finance Administration

The company and staff

- Extensive access control module through password rules and integration with single-sign-on features
- Allocation of printers to work stations,
- Task priorities by user,
- Personalized menus,
- Application authorizations by user,
- Management of authorizations,
- Management of absences and leaves and transfer of schedule to available user for a set period.

The system running

Management of print works

iMX has an extremely powerful queued tasks manager which enables real time processing of complex tasks involving heavy calculation, complex business rules, interactions with print queues.

- Change of printer, type of paper, priority,
- View texts queued for printing,
- Retrieval of printed texts for re-printing.

The same tool also handles fax management.

Listings & reports

Standard or specific statements or reports, in real time or scheduled.

Commercial, Corporate and Trade Finance Accountancy and invoicing

Accountancy

iMX has a powerful parameterization tool which allows the generation of any accountancy transaction from any event occurring in case during its life: movements are recorded in the Production general accountancy of iMX and/or sent as a flow of book entries or Reports on Accountancy Events to other applications, which ensure the management of general and budgetary accountancy, cash, etc.

The “Case” accountancy is handled in real time.

iMX is delivered with a full module for general accountancy processing, which among other features, allows a full accountancy audit (direct access to the event behind the entry and to the case concerned) and all kinds of print works (Ledger, books, balances).

This module is completed by a flexible outgoing interface capability to any accounting software package.

Invoicing

Besides its flexible management of Clients/Debtors accounts which can be customised, the invoicing module allows an easy definition and customization of invoicing principles, automation and control over calculations, management of commission payments to producers, co-factors, providers, etc.

This module offers full customization (invoicing items, periodicity, type of compensation, statements, etc.). It is even possible to prepare listings for specific invoicing.

It is an integral part of the accountancy module. It handles of course real time (after event occurred) debit in the client current account and end-of-month costs invoice.



Contact



200, rue du Vallon
Sophia Antipolis
06560 VALBONNE
France

Contact:

M. Franck PARIS
Phone: + 33 4 89 87 77 77
Fax: + 33 4 89 87 77 00
E-mail: sales@codix.eu

WWW.CODIX.EU

FRANCE BULGARIA USA SPAIN BELGIUM POLAND TUNISIA VIETNAM

The documentation of other optional modules
of **iMX** such as **iMX TEL, EXTRANET, FAX, EMAILS, SMS**
are available at the CODIX website

www.codix.eu